



Classrooms



Dormitories



Toilet and bath



Kitchen and canteen



Kler Deh High School Campus.

ကယ်ကယ် Gyaw Gyaw

06, - , 7, 330 1497

R I L M Z G S S P E T W

South-facing side of the first three classrooms. The windows let airflow through, also on the floor level where the students sit. Lifted roof for horizontal airflow. The classrooms follow the inclining landscape and is...

8 dormitories. Sleeping is done on mats on the floor that are easy to remove and clean. This gap between floors, both as a result of traditional construction, to...

Toilets and bath. Bananas function as a natural filter, rapidly absorbing the grey... Kitchen and canteen with focus on function and availability and flow of food, dishwashing and storage...

Kitchen and canteen with focus on function and availability and flow of food, dishwashing and storage. The site plan for the whole school campus...

Site-plan for the whole school campus. The site plan shows the layout of the school buildings and the surrounding landscape.



8 LI EVMP LE I T MGR T

EGME I LI MSJ ENT ST N I GLRS S KYMZE I NEMERHEFS adequate to local values, to the cultural specificity and responsive to LI RE EPOR MSR IR

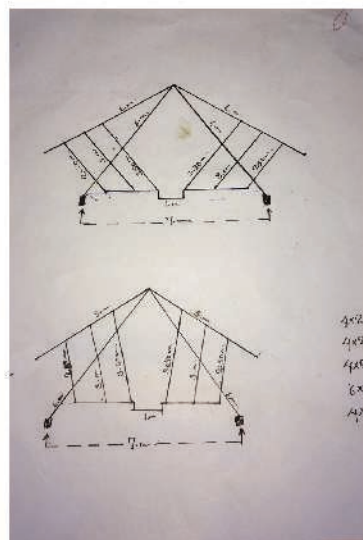
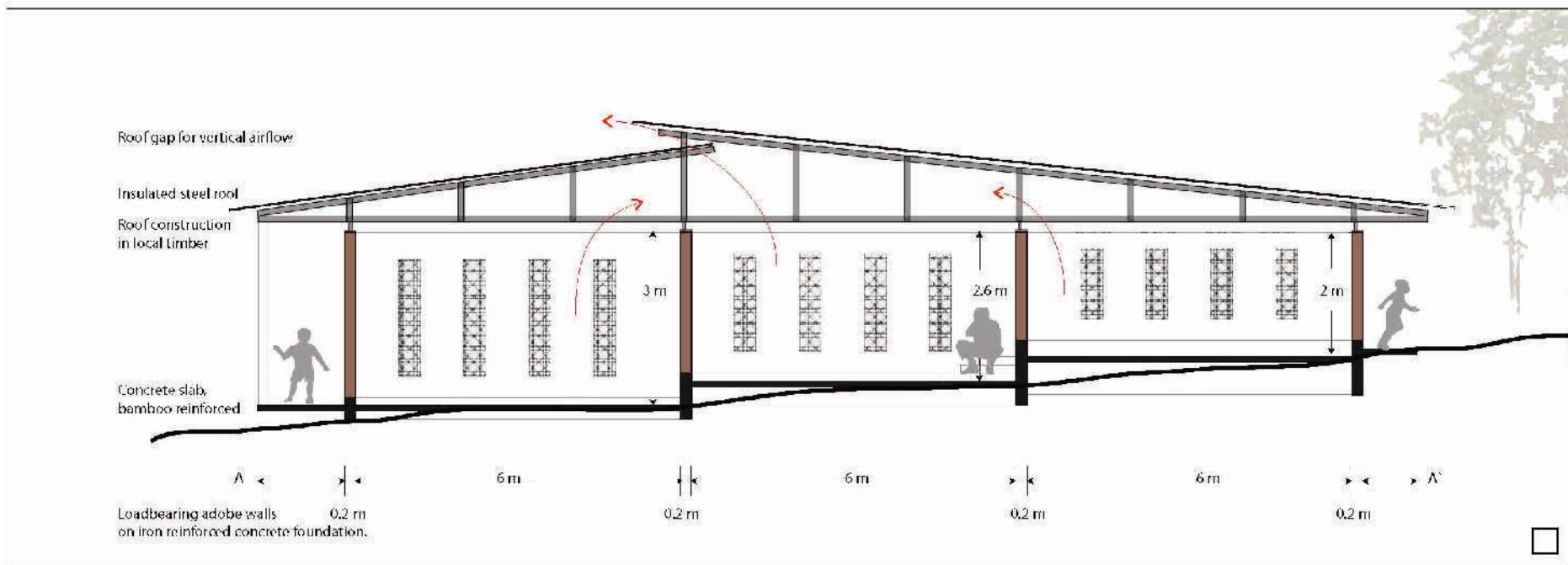
7MGR LI MEK EMZO MK MM HOI VNE I HOI S IG JS VGE GLECO MK LI BERHMETI VMRI MHERH EM MHERHCEM GSRV S GRVMI E SR JS DE WDFEG IR SJ LI DE MHRKMBILI STI EVPEI EH CE I HJS BERH M VVM I OH LI DE S FI OMEMESES FR JS LI VMT MEXVW BERHMMHOLI M I HBI DEI EJS DE MK LI DE MCVZHS FI VNEBI GLRMU I CS OLMVEI EBI EPPEI NEMVBI IH HONVEI EGS WOS M M BERHOSV S JOLI OMI I I I SJ GLE KI IS E ENYFR DEI EBS GS WOD I VMI EP E V S J O EG M BERH I PFS TR I HO S IG VZ EHS FI DE VKE M H G P EPECG T ERG

7: Through our past projects we have gained confidence in *adobe as a load-bearing material*. BM FI VV TI RVMI BERHOM M HE O W M G SRV S I CS ENYS I W G RW E SRCS RYMM I LI I JS I VVM CS OMM M LI OMSJ MZS JE CS R GI I DEVEI I RERIST SROROLI DEI EOR MSR IR EP OES L O L S K O SH G SR O ERVVS E SRIRHJS LI VGO SJ O E M I RERG OI DEI OETT CS SH G DE S FI EVES I OR MSR IR EPEI RE M OLE EPVONYS HEFR BERHVMZE J A

8 LI DE VMRSJ LI GEVSS VMMVMSRIRJRG SRIRHCGM E I DEH E SRIBILI EPVZ E I OH SJ DE S FI DE MCVZS LI DE MHRKVM BERHCEG HSRIC PJS G HGR O GI I VEF JS BS MK LI BERHMETI BILI OLMO EPVYGRK V L O PTO I TO MHS O TI E I VNEFR BOLI O E SJ OI DE BILI O MHS VYEGKRS LI EVO E I RE KI OEPS MKJS OS I RE EPAL OLM OI VY LI EVO MHS VBI VVERP O S O I IR EM G V M RAL BOLI CS SJ VV EH SJ O VVE I HOI S I R S T S J O E M FI O GRV G SRIRHVMZLI SRP O E I NPELE VMS BS CEP O SH G HOI O GLEMH O LI DE M LFS MKGM SJ O E ZS

Working long term BOLI VV I DEI EOM OI VV I O STP O S P I HOI I E I BERORU I CS VMSRS V P E I BS O GLRMU I VBI VV M R H E E M V S S RI O S I G S O I S I LI BOLI S MNERES MS MVZE I DEI ROST FE OI I O made to be temporary. Feedbacks from the users and experiences from first GRV G SR O I SHKE I O VZLI SITTS RM CS O LI O M T S I OI DE VMRERH O implementation. Compared to first time around, the buildings are lifted, have been given a stronger, long lasting timber floor for the walkway and insulated tin roof JS DE I VYI OEVMI O E M I RERG BERHEB RK O M VVEROIE FSS VNEO V M O E I NEMRHMBS CEP OMM O M R O E E S HVM GI SJ O E M OI OZS I SJ OI O E M R K O E M SRVBI O I OERHGE E VZEWVSRJS O RI E SRCS O RI E SR OIE FSS VVZ JS O I I O E M R K O M I CS RV MK O I DE G M H S O M O E O M I BERH O S R I O S O I O M V S CEP O E M S R I O E O R K O E M S R E P O E M H J E G H V S R O E G L S J O I E S M O S M M R H O E I BS O K I I H B I I BS CEP O E W I R O E I EPVVS R O I E O M I O O GR M M O I M O E M S R E P O E R H G E J V O

EGL ES MS GS RVMSJ O O S S VZ M O M R K V E G JS O V M H R V B O E G L E R O S EP O I I DEI O M R K V E G JS O V M H R V B O I O E S MS MVZ





8 LI EVMP LE I T MGP
 Share knowledge, promote discussion, reflection and awareness, and
 CS PFS EI MLI EH ERG IR SJ LI SVGP SH GIRISJ LEFME D

Kler Deh High School is the first high school in the area and is a vital step
 S E HM SKI WZ SRGMB SRIRERHOLI OF MHAKSJOLI CS RM

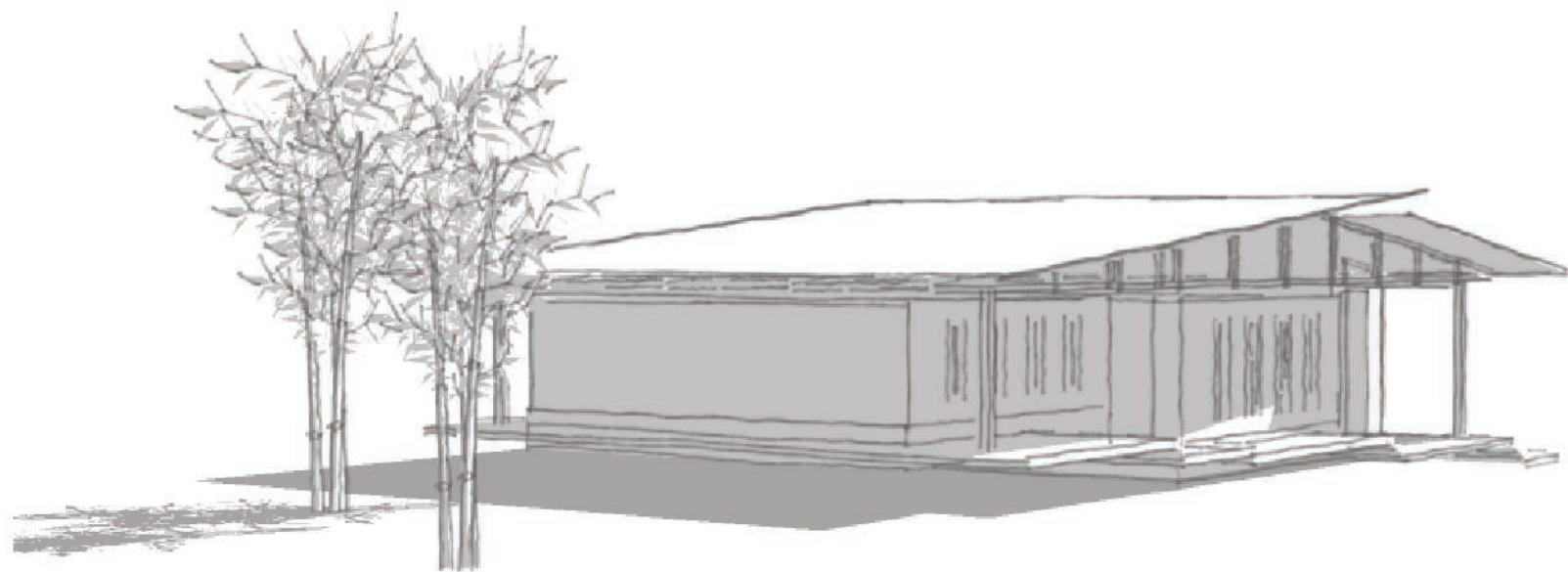
8 LI SIG EVBCEP MMBI HEI DEIROH CE MROITE IR E BLE EDOE BE
 ERHM TR IRIHMLCSWCSSTI E MROMLZ ERHOLI MLEFMER VERHEMJI
 IR BEH VMVMSJOLI MKEI SJOR OI LEOEVEE EPKS EPJS Z ERHO E
 E CS VAS OLE *an including and democratic process* CS THEI BS SIRP VEVEE
 I MRS BK BE VEVEE ERCS PFS E M IEG MLEO NME IEECK S RHEHEE E
 VAPRS MARSIRIHEH VAPOLI BEI EBI SVTTS VMCS BE VMG ERHEI GMM ERHER
 MGP HAKI SG VMS BE GMSIR EOKIMVZJE MBS JS OI EVMI G SJOLI SVGP
 LM E GL

The first meeting was a challenge, but with local connections and support, and a
 good reputation, we got the first small steps of debate up in the air. It is still not
 ERISTI ROTE JS JS BEVZ VMBRIB EVZLI OSR LVERHO E VAE I BS RI BE ERHOLI
 T SIG DEVS ROLI OI HFEONGS R M I CS M TI WVMZ

ugh drawings, sketches and models
 FIROMHBS ORGS EK CSR M SIROLI SIG MVS I I BI CS TR IP
 H VMI HEI JS I SIG VNE OI DEI ERMI EERHEE HK BE OI THE I BS TRAK
 EVZLI OI SIG SKI WVMZ I EMBE I OSVP SVPI HO M RI EPT MGP VERHO
 HMZ VMBRVZ MOLI OI E BE PFS ERHS LI OI SPI HTE VMBRM

group of
 friends M JE MBI MLFS VERHOLI BS CECS RM EPTA SPI HOI DEI EMI
 IR IEECK S RHEHEE MVMORS P HK ERHOMVEI CS TR IR DEGLI LI ERHO
 LE I EGS SRVVMVMSJ OI S OLE VMVMS SVPI OI OI MS CLEP RK OLE
 ML BE MVO

Peter MZLI ENICE TI RI OI MZLI BE ENIEI LMHCS RV GMSIRERHEH W IR VZ
 done to the first design. Together with Phillipa, Pah Me and Line/Nee Ga Mwee, he
 MARI SJOLI CS JS RH V Phillipa MZGP VSRVAP EOKICE I SJ IS KERME MREP
 E I VMBRIB MHAKM ERHONGS RVER P OI TRAKTUS G M OI EVMI G SJ
 LI BS CECS RM Line/Nee Ga Mwee MZLI EM GS ERHOLE KI SJ BE VMB
 ERHO SIG EREKI IR OI ENORE I OI ERVZ M JEG MZIE I RBERK EK ERHO
 reflects her leadership philosophy and general attitude. Pah Me MZLI BE VCS P
 league! With special collaborative skills and a fine touch for finishing work, he is
 S VMGI CS P AW Eh Wah MZGL E KI SJ EEM OCS RS MVERHEH MVMV SIRO
 ZLI MVOI TRAKER OI SIROLI IS KERME MBIERHO EO VVM I CS CS I GOLI RV I
 L M K MVS SJ ERHS I AW Dee MZAE OI OI ELDV MVERHERHOMVEP HOLI CS O
 , I BE M VZLI CE BEI VMS TRAKERHO ERVE I VZLI RI I BI H H S te Pha MZLI
 S RKI VBE ERVOLI OSVBE M PERHOEKI CS BE RIERHCS M TS I ES LOMBS RO
 ERHOLI OI RI EPMVMSJ OI OI E OI e MVS TS M KOLI OI HE M SJ O E O E
 F JS G MARSIROCS RS MEPTERRMKERHEH MVMV M MVM V M Lee Da Pah MZLI
 VSRKI VERHSIP VERHOLI OI E VVM I BI



Gyaw (2009 -): Peter, Phillipa, Line/Nee Ga Mwee, Pah Me, Paw Eh Wah, Saw Dee, Ste Pha, Ole Gunnar, See Da Pah.



Kler Deh Highschool 2014



Kler Deh Dormitories 2014



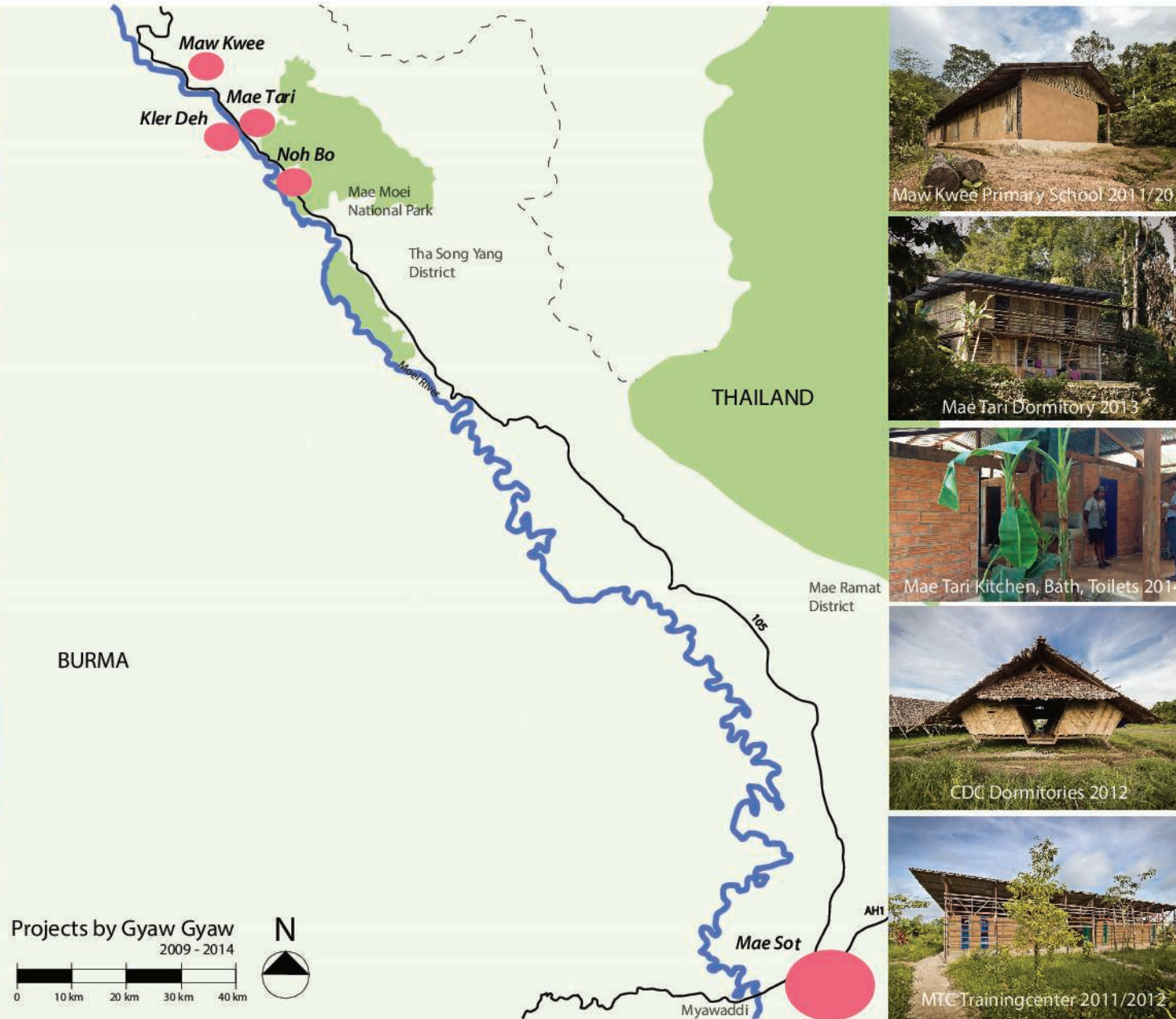
Noh Bo Academy School 2011



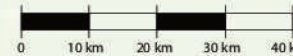
Grace Garden Ed-Center 2013



Grace Garden Dormitory 2013



Projects by Gyaw Gyaw 2009 - 2014



Map by Google



Maw Kwee Primary School 2011/2012



Mae Tari Dormitory 2013



Mae Tari Kitchen, Bath, Toilets 2014



CDC Dormitories 2012



MTC Training center 2011/2012

8 LI □ EVMP □ LE I □ T □ M □ T □ R □ □ □ □
 7 TTS □ E □ M □ E □ S □ H □ S □ G □ E □ M □ P □ M □ P □ E □ R □ E □ H □ I □ H □ M □ T □ P □ R □ E □
 T □ S □ G □ W □ E □ R □ H □ E □ I □ T □ S □ E □ G □ L □ I □ V □ A □ L □ S □ R □ M □ E □ M □ H □ A □ K □

E □ E □ E □ W □ E □ I □ R □ E □ R □ K □ E □ K □ E □ R □ H □ O □ E □ R □ V □ A □ S □ P □ O □ N □ T □ E □ W □ T □ I □ J □ I □ E □ E □ G □ L □ I □ □
 word forward, this reflects our philosophy about a gentle and sustainable improve □
 I □ R □ S □ I □ J □ O □ R □S □ P □ H □ I □ □ M □ L □ J □ S □ G □ W □ E □ R □ E □ G □ L □ M □ G □ I □ E □ R □ H □ O □ R □ G □ M □ R □ E □ M □

S □ M □ A □ M □ E □ F □ I □ M □ W □ E □ E □ I □ S □ J □ G □ S □ W □ O □ I □ J □ S □ G □ W □ E □ R □ O □ R □S □ P □ H □ I □ □ S □ G □ W □ E □ R □ H □
 I □ W □ V □ I □ L □ E □ E □ I □ W □ M □ E □ F □ R □ E □ I □ W □ S □ J □ O □ S □ B □ K □ I □ G □ R □S □ E □ R □ H □ G □ P □ I □ □

8 □ S □ S □ I □ E □ R □ H □ O □ R □G □S □ E □ K □ I □ E □ R □ V □ W □ S □ J □ O □R □S □ P □ H □ I □ □ M □ C □ P □ W □ O □ R □E □R □H □E □ M □O □M □E □ S □I □R □O □
 L □ I □ L □ S □ P □ □ S □ G □ W □ M □ E □ K □S □ E □P □I □O □M □P □ □

3 □ E □ M □ J □ S □ G □ W □ E □ R □ E □ G □ L □ M □ G □ I □ E □ I □ E □ H □ M □M □V □E □ S □I □S □I □S □ K □E □R □M □E □ S □I □R □O □F □E □R □R □A □K □I □
 G □S □ T □ I □ E □R □H □O □R □K □E □K □ W □O □R □M □E □ I □ E □O □M □L □O □ S □ M □ E □M □Z □I □ P □ □

8 □ L □ I □ M □ S □ J □ O □S □ G □ E □P □I □E □S □I □S □I □R □O □L □I □ E □I □M □H □A □K □M □ □ R □W □I □ W □E □J □I □ P □A □K □I □S □I □S □ R □I □ W □M □T □S □J □O □L □I □ □
 T □ S □ I □ G □ E □R □H □O □L □I □ E □I □ S □P □I □ I □R □S □I □O □L □I □ M □V □W □O □L □I □ □ E □R □R □A □K □E □R □H □E □ W □M □O □ S □ G □ W □M □ O □
 ing consensus solutions, affirms empowerment of the local communities.

I □ W □M □ □ S □ M □O □ E □I □ N □E □M □E □R □H □O □M □W □P □ S □I □R □V □I □L □E □E □S □R □S □ E □E □ O □L □I □ O □R □M □S □R □I □R □ □
 □ M □A □K □I □B □ G □E □P □ V □S □ G □ V □O □I □ □ M □M □ M □ V □E □R □V □S □ □ M □M □S □I □R □W □E □R □H □O □M □T □S □ O □L □I □ B □ G □E □P □
 I □ G □S □R □ □ S □ O □L □I □ □ S □I □ G □V □S □ □ J □I □ G □M □ P □ W □ I □ □ M □K □S □ E □M □Z □I □ □ S □I □ G □V □E □I □ E □I □ W □M □I □ H □ □
 S □ □ M □ M □ O □L □I □ B □R □K □ □ R □R □A □K □E □R □H □O □ E □P □I □ R □E □R □G □ □ S □ W □S □J □O □L □I □ E □I □M □H □A □K □V □I □

S □ E □R □E □ G □ L □ M □ G □ E □P □I □S □ M □ S □J □O □M □ □ M □M □M □T □S □ E □R □O □L □E □ O □L □I □ □ S □I □ G □V □E □I □ □I □ P □E □H □
 W □H □S □ O □L □I □ E □R □H □M □E □T □I □ E □R □H □O □L □E □ M □O □M □E □ M □A □O □L □E □G □S □ H □E □R □G □ M □L □O □S □ G □E □P □ E □H □M □S □I □R □W □E □L □M □Z □
 I □R □W □I □ W □G □ P □ E □P □E □C □T □ E □R □G □ M □L □I □O □L □I □ □ G □S □ R □M □ □ □ I □ O □E □R □ □ S □ □ E □O □ □ S □H □O □ E □ □
 ples worth following for locals as well as other NGOs. This also includes focus on
 J □ R □G □M □R □E □M □ E □R □H □O □M □ T □P □ I □R □E □ S □I □R □S □J □O □I □ □ G □L □R □M □I □ W □I □L □E □S □I □R □O □ W □P □V □A □L □I □ W □Z □M □S □J □ □
 E □I □ N □E □M □E □R □H □E □ M □H □A □K □V □I □L □E □ E □I □ E □R □V □I □ W □O □L □I □ E □I □ H □M □S □J □O □L □I □ M □V □W □

By building schools and houses that benefit the local population, children and
 S □ L □I □B □L □I □T □E □ M □G □R □E □ □I □ □ M □O □S □ E □I □ M □A □K □M □ E □P □W □M □T □S □J □O □I □ I □S □T □I □R □ □ S □ O □L □I □ B □ G □E □P □
 V □V □I □ I □ □ S □R □ M □A □K □S □ □ S □T □R □V □S □ R □E □I □ S □T □I □R □ □M □S □ □S □ E □P □

-R □ E □ E □ E □ E □ M □ W □O □M □S □ W □M □ W □E □I □O □T □I □ W □R □I □H □O □L □I □ E □I □ F □I □ V □E □I □ □
 H □Y □I □ I □R □ □ E □E □C □K □S □ R □H □M □E □R □H □O □I □ I □M □E □M □I □ E □I □S □I □R □O □L □O □R □S □ P □H □I □ E □R □H □O □M □S □I □I □ □
 M □E □R □S □E □P □ E □P □ V □I □ G □J □S □ □ E □H □Y □I □ I □R □G □ W □E □R □H □E □L □V □E □I □ H □O □M □I □ O □L □E □O □L □M □O □I □ E □ □
 I □T □I □ W □R □W □E □R □H □O □L □E □O □I □ □ E □I □ E □G □L □M □I □H □

